



Allen-Bradley

POINT I/O ASCII Modules

1734-232ASC, 1734-485ASC

User Manual

**Rockwell
Automation**

Important User Information

Because of the variety of uses for the products described in this publication, those responsible for the application and use of these products must satisfy themselves that all necessary steps have been taken to assure that each application and use meets all performance and safety requirements, including any applicable laws, regulations, codes and standards. In no event will Allen-Bradley be responsible or liable for indirect or consequential damage resulting from the use or application of these products.

Any illustrations, charts, sample programs, and layout examples shown in this publication are intended solely for purposes of example. Since there are many variables and requirements associated with any particular installation, Allen-Bradley does not assume responsibility or liability (to include intellectual property liability) for actual use based upon the examples shown in this publication.

Allen-Bradley publication SGI-1.1, *Safety Guidelines for the Application, Installation and Maintenance of Solid-State Control* (available from your local Allen-Bradley office), describes some important differences between solid-state equipment and electromechanical devices that should be taken into consideration when applying products such as those described in this publication.

Reproduction of the contents of this copyrighted publication, in whole or part, without written permission of Rockwell Automation, is prohibited.

Throughout this publication, notes may be used to make you aware of safety considerations. The following annotations and their accompanying statements help you to identify a potential hazard, avoid a potential hazard, and recognize the consequences of a potential hazard:

WARNING

Identifies information about practices or circumstances that can cause an explosion in a hazardous environment, which may lead to personal injury or death, property damage, or economic loss.

ATTENTION

Identifies information about practices or circumstances that can lead to personal injury or death, property damage, or economic loss.

IMPORTANT

Identifies information that is critical for successful application and understanding of the product.

Rockwell Automation Support

Before you contact Rockwell Automation for technical assistance, we suggest you please review the troubleshooting information contained in this publication first.

If the problem persists, call your local Rockwell Automation representative or contact Rockwell Automation in one of the following ways:

Phone	United States/Canada	1.440.646.5800
	Outside United States/Canada	You can access the phone number for your country via the Internet: <ol style="list-style-type: none">1. Go to http://www.ab.com2. Click on <i>Product Support</i> (http://support.rockwellautomation.com)3. Under <i>Support Centers</i>, click on <i>Contact Information</i>
Internet	⇒	<ol style="list-style-type: none">1. Go to http://www.ab.com2. Click on <i>Product Support</i> (http://support.rockwellautomation.com)

Your Questions or Comments on this Manual

If you find a problem with this manual, please notify us of it on the enclosed How Are We Doing form.

Purpose of This Manual

This manual describes how to install, configure, and troubleshoot your POINT I/O 1734-232ASC module (for the RS-232 network) or 1734-485ASC module (for the RS-485 or RS-422 network).

For Information on	See Chapter/ Appendix
Installing the ASCII Module	1
Configuring Your ASCII Module	2
Diagnostics	3
Specifications	A

Who Should Use This Manual

You must be able to use RSNetWorx for DeviceNet software or similar configuration software to set this module. You must have the capability to download and use Electronic Data Sheet (EDS) files.

We assume you know how to do this in this manual. If you do not, refer to your software user manuals or online help before attempting to use this module.

Related Products and Documentation

The following table lists related POINT I/O products and documentation.

Catalog Number	Description	Related Publications	
Communication Adapter	DeviceNet Adapter (Cat. No. 1734-ADN)	Installation Instructions	1734-IN007
Communication Interface	DeviceNet Interface (Cat. No. 1734-PDN)	Installation Instructions	1734-IN057
1734D Series	1734D Series 24V dc 8 In/8 Out Combo Module (Cat. No. 1734D-IB8XOB8E, -IB8XOB8ES)	Installation Instructions	1734-5.20
	1734D Series 24V dc 8 In/8 N.O. Relay Combo Module (Cat. No. 1734D-IB8XOW8, -IB8XOW8S)	Installation Instructions	1734-5.21
	1734D Series 120V ac 8 In/8 Out Combo Module (Cat. No. 1734D-IA8XOA8, -IA8XOA8S)	Installation Instructions	1734-5.22
	1734D Series 120V ac 8 In/8 N.O. Relay Combo Module (Cat. No. 1734D-IA8XOW8, -IA8XOW8S)	Installation Instructions	1734-5.23
Wiring Base Assemblies	Wiring Base Assembly with 8 Screw-Clamp or Spring-Clamp Removable Terminal Blocks (Cat Nos. 1734-TB, -TBS)	Installation Instructions	1734-IN511
	Wiring Base Assembly with 12 Screw-Clamp or Spring-Clamp Removable Terminal Blocks (Cat Nos. 1734-TB3, -TB3S)	Installation Instructions	1734-IN013
AC Modules	120V ac 2 Input Module (Cat. No. 1734-IA2)	Installation Instructions	1734-IN010
	120/220V ac 2 Output Module (Cat. No. 1734-OA2)	Installation Instructions	1734-IN009
	220V ac 2 Input Module (Cat. No. 1734-IM2)	Installation Instructions	1734-IN008
DC Modules	24V dc 2 Input Sink Module (Cat. No. 1734-IB2)	Installation Instructions	1734-IN051
	24V dc 4 Input Sink Module (Cat. No. 1734-IB4)	Installation Instructions	1734-IN051
	24V dc 2 Input Source Module (Cat. No. 1734-IV2)	Installation Instructions	1734-IN052
	24V dc 4 Input Source Module (Cat. No. 1734-IV4)	Installation Instructions	1734-IN052
	24V dc Electronically Protected 2 Point Output Module (Cat. No. 1734-OB2E)	Installation Instructions	1734-IN056
	24V dc Electronically Protected 4 Point Output Module (Cat. No. 1734-OB4E)	Installation Instructions	1734-IN056
Analog Modules	24V dc Analog 2 Current Input Module (Cat. No. 1734-IE2C)	Installation Instructions	1734-IN053
	24Vdc Analog 2 Current Output Module (Cat. No. 1734-OE2C)	Installation Instructions	1734-IN054
	24V dc Analog 2 Voltage Input Module (Cat. No. 1734-IE2V)	Installation Instructions	1734-IN001
	24Vdc Analog 2 Voltage Output Module (Cat. No. 1734-OE2V)	Installation Instructions	1734-IN002
RTD Module	RTD Input Module (Cat. No. 1734-IR2)	Installation Instructions	1734-IN012
Thermocouple Module	Isolated Thermocouple Input Module (Cat. No. 1734-IT2I)	Installation Instructions	1734-IN011

Catalog Number	Description	Related Publications	
Counter Modules	24V Encoder/Counter Module (Cat. No. 1734-IK)	Installation Instructions User Manual	1734-IN006 1734-UM006
	5V Encoder/Counter Module (Cat. No. 1734-IJ)	Installation Instructions User Manual	1734-IN005P 1734-UM006
	24V dc Very High Speed Counter Module (Cat. No. 1734-VHSC24)	Installation Instructions User Manual	1734-IN003 1734-UM003
	5V dc Very High Speed Counter Module (Cat. No. 1734-VHSC5)	Installation Instructions User Manual	1734-IN004 1734-UM003
Relay Module	24V dc, 120V ac, and 240V ac 2 Relay Sink/Source Output Module (Cat. No. 1734-OW2)	Installation Instructions	1734-IN055
Field Power Distributor	Field Power Distributor (Cat. No. 1734-FPD)	Installation Instructions	1734-IN059
Expansion Power Supply	24V dc Expansion Power Supply (Cat. No. 1734-EP24DC)	Installation Instructions	1734-IN058

Notes:

Installing the ASCII Module	Chapter 1
	General Information on the ASCII Modules 1-1
	Installing the Mounting Base/ Wiring Base Assembly 1-1
	Installing an I/O Module 1-3
	Installing the Removable Terminal Block 1-4
	Removing a Mounting Base 1-5
	Wiring the 1734-232ASC Module 1-6
	Wiring the 1734-485ASC Module 1-6
	Cable Pinouts for Standard DB Connectors. 1-8
	How to Install a Serial Network 1-8
	How to Read Serial Device Input Data from the ASCII Module . 1-9
	How to Write Serial Output Data to the ASCII Module 1-10
	Setting Up DeviceNet Communications 1-11
	Polled I/O 1-11
	Cyclic and Change of State I/O. 1-12
	Setting Up the DeviceNet I/O Connections 1-12
	Setting Up the Connection Timer (EPR) 1-13
	Operating Mode Selections 1-14
	Transmit Handshake vs. Transmit Immediate Option. . . 1-14
	Produce Immediate vs. Master/Slave Handshake Option 1-15
	Pad vs. No Pad Option. 1-15
Configuring Your ASCII Module	Chapter 2
	About Communications 2-1
	Configuration Overview 2-2
	Adding the ASCII Modules to Your Network 2-4
	Adding I/O Modules to Your Network 2-5
	Setting the ASCII Module's Parameters 2-6
	Checking I/O Status and Viewing the EDS File. 2-8
	Configuration Assembly. 2-9
	Parameter List 2-10
	POINT I/O Parameters 2-15
	Receiving Serial Data from the ASCII Device 2-15
	Setting Up the Receive Character Buffer Length. 2-15
	Setting Up and Using Pad Mode 2-16
	Setting Up and Using the Swap Bytes Mode 2-17
	Setting Up and Using Delimiter Operation 2-18
	Receive String Data Type 2-18
	Setting Up the Scanner I/O Receive Size 2-19
	Explicit Messages to Receive the Serial Data String 2-20
	Status Byte Description 2-20
	Transmitting Serial Data to the ASCII Device 2-21
	Setting Up the Transmit Character Buffer Length 2-22
	Setting Up and Using the Transmit Delimiter. 2-22
	Transmit String Data Assemblies. 2-23

Transmit Handshake vs. Transmit Immediate Mode 2-24
 Transmitting Serial Data 2-26
 Setting Up the Scanner I/O Transmit Size 2-26
 Produce Immediate vs. Master/Slave Handshake Mode . 2-27
 Explicit Messages to Transmit Serial Data String 2-28

Chapter 3

Diagnostics

Using the Indicators for Troubleshooting 3-1

Appendix A

Specifications

Specifications for the ASCII Modules A-1

Appendix A

**Using the ASCII Modules with the
 ControlLogix System Application
 Examples**

About These Examples B-1
 Serial Port Connector B-1
 EDS Configuration B-2
 DeviceNet Data Details B-3
 Sending Data Through the ASCII Modules. B-3
 Receiving Data From the ASCII Modules. B-3
 Reading Data from the ASCII Modules into ControlLogix B-4
 Transmitting Data from ControlLogix Through the
 ASCII Modules. B-6

Installing the ASCII Module

General Information on the ASCII Modules

The ASCII modules provide a flexible DeviceNet interface to a wide variety of RS-232, RS-485, and RS-422 ASCII devices. The modules provide the communication connections to the ASCII device.

The 1734-232ASC module connects to the RS-232 network while the 1734-485ASC module connects to the RS-485 or RS-422 network.

Installing the Mounting Base/Wiring Base Assembly

The wiring base assembly (1734-TB or -TBS) consists of a mounting base (cat. no. 1734-MB) and a removable terminal block (cat. no. 1734-RTB or -RTBS). You can install the assembly, or just the mounting base. To install the mounting base/wiring base assembly on the DIN rail, proceed as follows.

ATTENTION

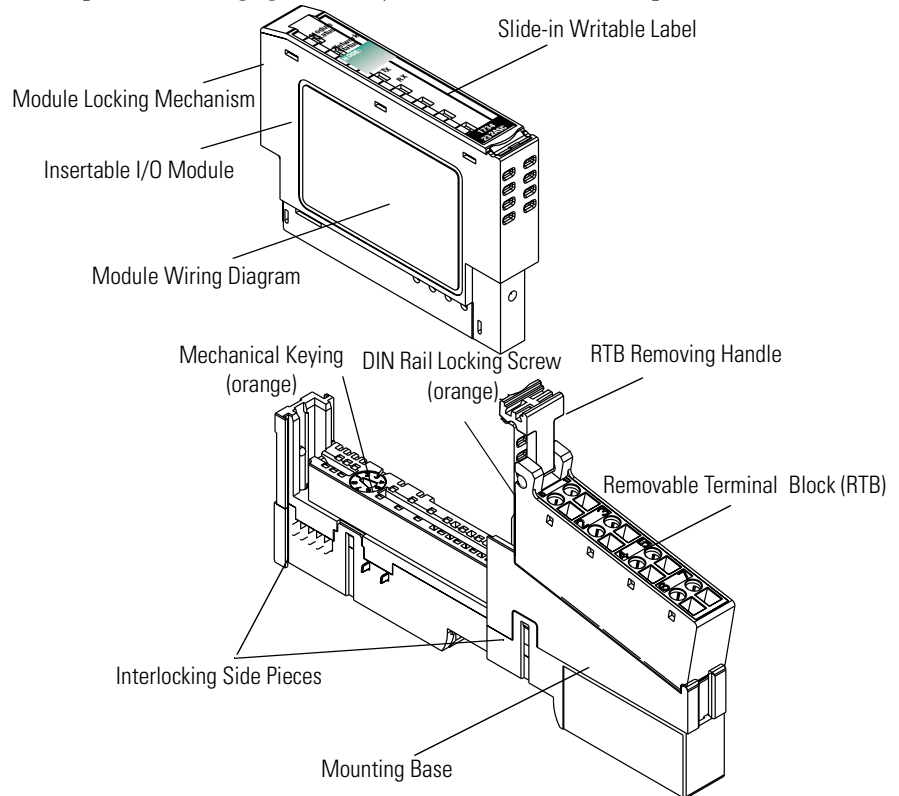
POINT I/O is grounded through the DIN rail to chassis ground. Use zinc-plated, yellow-chromated steel DIN rail to assure proper grounding. Using other DIN rail materials (e.g. aluminum, plastic, etc.) which can corrode, oxidize or are poor conductors, can result in improper or intermittent platform grounding.

WARNING

When you connect or disconnect the Removable Terminal Block (RTB) with field side power applied, an electrical arc can occur. This could cause an explosion in hazardous location installations.

Be sure that power is removed or the area is nonhazardous before proceeding.

1. Position the mounting base/wiring base assembly vertically above the installed units (adapter, power supply or existing module).
2. Slide the mounting base down allowing the interlocking side pieces to engage the adjacent module or adapter.



3. Press firmly to seat the mounting base on the DIN rail. The mounting base will snap into place.
4. To remove the mounting base from the DIN rail, remove any installed module (and any module immediately to the right), and use a small bladed screwdriver to rotate the DIN rail locking screw to a vertical position. This releases the locking mechanism. Then lift straight up to remove the mounting base.
5. Repeat this procedure for the next mounting base assembly.

Installing an I/O Module

The module can be installed before, or after base installation. Make sure that the mounting base is correctly keyed before installing the module into the mounting base. In addition, make sure the mounting base locking screw is positioned horizontal referenced to the base.

WARNING



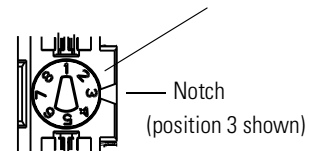
When you insert or remove the module while backplane power is on, an electrical arc can occur. This could cause an explosion in hazardous location installations.

Be sure that power is removed or the area is nonhazardous before proceeding.

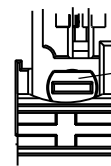
1. Using a bladed screwdriver, rotate the keyswitch on the mounting base clockwise till the number required for the type of module being installed aligns with the notch in the base.

Position 2

Turn the keyswitch to align the number with the notch.

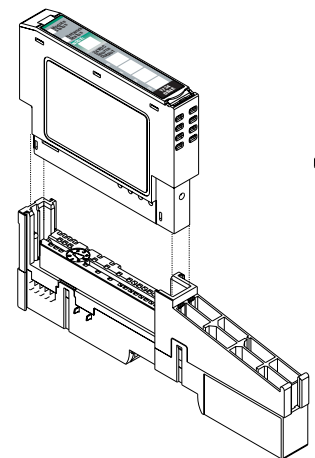


2. Make certain the DIN rail locking screw is in the horizontal position. (You cannot insert the module if the locking mechanism is unlocked.)



Make sure the DIN rail locking screw is in the horizontal position.

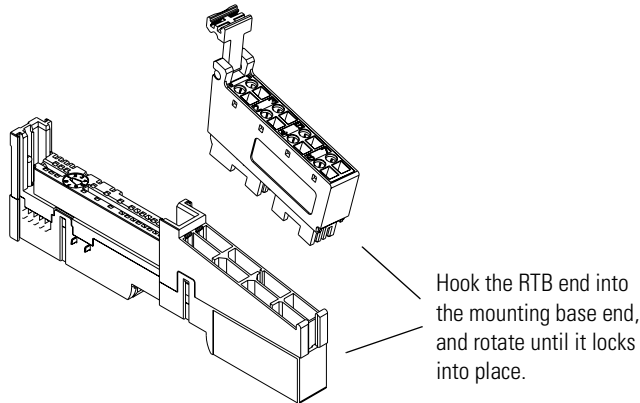
3. Insert the module straight down into the mounting base and press to secure. The module will lock into place.



Installing the Removable Terminal Block

A removable terminal block is supplied with your mounting base assembly. To remove, pull up on the RTB handle. This allows the base to be removed and replaced as necessary without removing any of the wiring. To reinsert the removable terminal block, proceed as follows.

1. Insert the RTB end opposite the handle into the base unit. This end has a curved section that engages with the mounting base.



WARNING



When you connect or disconnect the Removable Terminal Block (RTB) with field side power applied, an electrical arc can occur. This could cause an explosion in hazardous location installations.

Be sure that power is removed or the area is nonhazardous before proceeding.

2. Rotate the terminal block into the mounting base until it locks itself in place.
3. If an I/O module is installed, snap the RTB handle into place on the module.

Removing a Mounting Base

To remove a mounting base, you must remove any installed module, and remove the removable terminal block (if wired).

1. Unlatch the RTB handle on the I/O module.
2. Pull on the RTB handle to remove the removable terminal block.

WARNING

When you connect or disconnect the Removable Terminal Block (RTB) with field side power applied, an electrical arc can occur. This could cause an explosion in hazardous location installations.

Be sure that power is removed or the area is nonhazardous before proceeding.

-
3. Press in on the module lock on the top of the module and pull up on the I/O module to remove from the base.

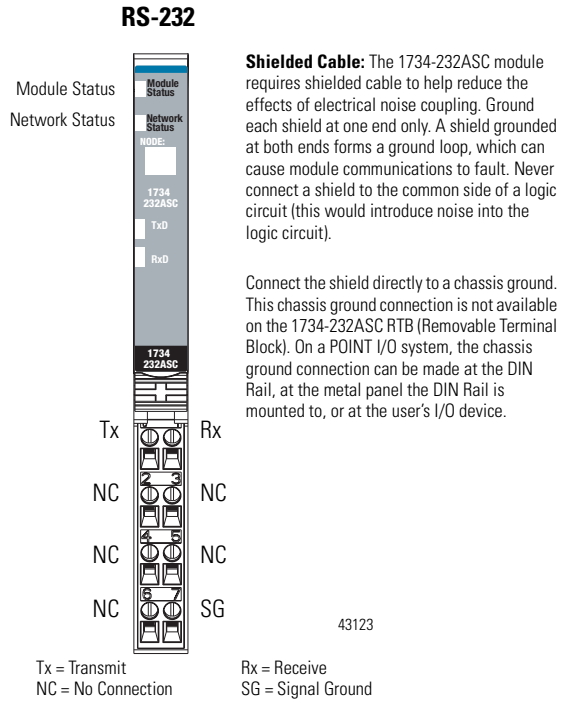
WARNING

When you insert or remove the module while backplane power is on, an electrical arc can occur. This could cause an explosion in hazardous location installations.

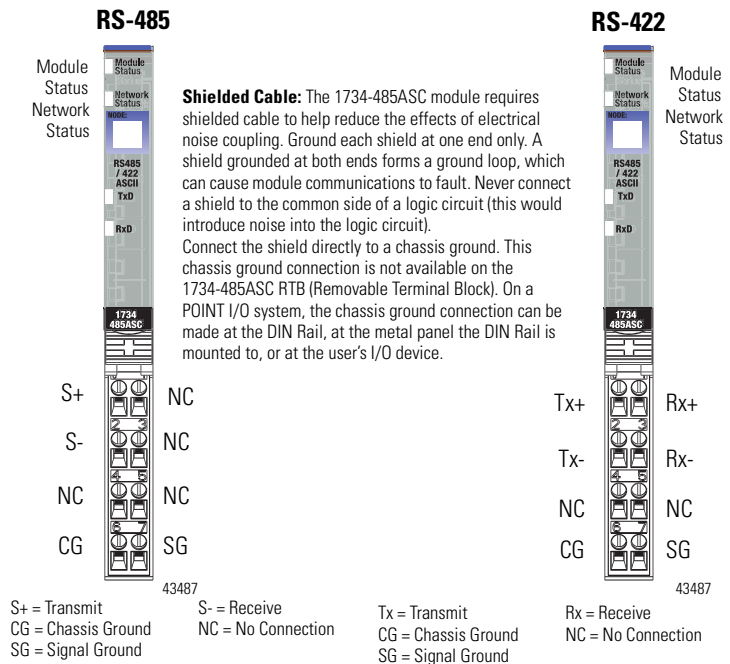
Be sure that power is removed or the area is nonhazardous before proceeding.

-
4. Remove the module to the right of the base you are removing. (The interlocking portion of the base sits under the adjacent module.)
 5. Use a small bladed screwdriver to rotate the orange DIN rail locking screw on the mounting base to a vertical position. This releases the locking mechanism.
 6. Then lift the mounting base straight up to remove.

Wiring the 1734-232ASC Module



Wiring the 1734-485ASC Module



Module Terminations			
Terminal	RS-232	RS-485	RS-422
0	Tx ¹	S ⁺¹	Tx ⁺¹
1	Rx ²	NC	Rx ⁺¹
2	NC	S ⁻²	Tx ⁻²
3	NC	NC	Rx ⁻²
4	NC	NC	NC
5	NC	NC	NC
6	NC	CG	CG
7	SG	SG	SC

1 S+ and Tx+ are transmit from the module

2 S- and Rx- are receive into the module

RS-232

0	1
Tx	Rx
2	3
NC	NC
4	5
NC	NC
6	7
NC	SG

43124

RS-485

0	1
S+	NC
2	3
S-	NC
4	5
NC	NC
6	7
CG	SG

43488

RS-422

0	1
Tx+	Rx+
2	3
Tx-	Rx-
4	5
NC	NC
6	7
CG	SG

43489

Tx, S+ = Transmit Rx, S- = Receive
 NC = No Connection SG = Signal Ground
 CG = Chassis Ground

Cable Pinouts for Standard DB Connectors

Table 1.1 ASCII Functions

Function	Pin Number	
	DB-25	DB-9
Transmit Data (TXD)	2	3
Receive Data (RXD)	3	2
Signal Ground (SG)	7	5

How to Install a Serial Network

The communication between your serial device(s) and the:

- 1734-232ASC is an RS-232 3-wire network.
- 1734-485ASC is an RS-485 2-wire network or RS-422 4-wire network

1. Connect an appropriate cable to your device.
2. Connect the other end of the cable to the ASCII module using the designated positions on the 1734-TB terminal block.

Notice the terminal markings on the ASCII module case.

3. Turn on power to the serial device and the ASCII module.
4. Set up the ASCII buffer sizes on the ASCII module.

The defaults are 20 and 20. If more than 20 bytes are required for the transmit or receive buffers, set the appropriate parameters in your configuration file to the buffer size you need for your ASCII data.

This will modify the I/O message size. You will need to reconfigure the poll/COS/cyclic transmit and receive data sizes if you modify the ASCII buffer size from the default value.

In many configuration tools, this will unmap the data in your scanner's scan list. They must be remapped in order to process the data in your PLC or PC software. These values are displayed in the Parameter Object, Class 15 (F_{hex}).

5. The ASCII module produces and consumes the number of ASCII characters selected plus four.

These produce and consume sizes are presented for your information in parameters 13 and 23, respectively.

TIP

Make sure that you set up your scanner to the correct sizes using this data.

How to Read Serial Device Input Data from the ASCII Module

1. Connect to the ASCII module from your configuration tool.
2. Connect the serial side of the ASCII module to your computer's serial port or another serial device.
3. Go to the device configuration screen in the configuration tool.
4. Make sure that the ASCII module is in the default factory configuration.
5. Set the baud rate and framing format of the serial port to the baud rate and framing format of the serial device that you are using.
6. Put the configuration tool in monitor mode.
7. Direct the device that you are communicating with to send data.

For example, if you are connected to a computer terminal program, type a message into the terminal. When you hit enter, the module will update the data with the message that you typed, and increment the transaction ID.

The default assembly of the poll response message is shown below.

Table 1.2 Default Receive Data Assembly Format (Default Mode)

Byte 1	Byte 2	Byte 3	Byte 4	Byte 5-23	Byte 24
RX Transaction ID Byte	Status Byte	Reserved	Length	ASCII Data	<CR> (Terminator)

How to Write Serial Output Data to the ASCII Module

1. Connect to the ASCII module from your configuration tool.
2. Connect the serial side of the ASCII module to your computer's serial port or another serial device.
3. Go to the device configuration screen in the configuration tool.
4. Make sure that the ASCII module is in the default factory configuration.
5. Set the baud rate and framing format of the serial port to the baud rate and framing format of the serial device that you are using.
6. Enter the serial data that you wish to send in the transmit data parameter and choose apply.
7. Change the length of the data in the length byte to reflect the length you wish to send and choose apply.
8. Change the transmit transaction ID and choose apply.

The ASCII module will generate the characters you typed on the computer screen.

Poll messages work in the same manner as the parameter object interface.

Table 1.3 Default Transmit Data Assembly Format (Default Mode)

Byte 1	Byte 2	Byte 3	Byte 4	Byte 5-23	Byte 24
Reserved	TX Transaction ID Byte	Reserved	Length	ASCII Data	<CR> (Terminator)

Setting Up DeviceNet Communications

The ASCII module supports 4 modes of data transfer of the serial buffer:

- Polled I/O
- Change of State I/O
- Cyclic I/O
- Explicit Message

Polled I/O

The ASCII module monitors the transaction ID for a change in the transaction ID. If the transaction ID changes, then the ASCII module transmits the data buffer on its serial link. If the transaction ID does not change, then the device does not transmit the data buffer.

After the device has transmitted its data out to the serial link, the ASCII module then takes any information that is stored in its current serial input buffer and sends this data to the DeviceNet master. It sends all characters up to and including the received delimiter, including pad characters if not deselected.

When the ASCII module receives a new message (either with a delimiter or with an overflow condition without a delimiter) the device then increments the receive record, updates the length byte, and copies the new information from the last receive delimiter into the buffer. If an overflow occurs, the ASCII module indicates so in its receive status bit. The receive status byte also reflects parity errors in the device.

Cyclic and Change of State I/O

The Cyclic and Change of State (COS) connections initiate a DeviceNet message (production) every time the connection timer (EPR) expires. They report the most current data in the ASCII module's serial port receive buffer. In addition, the COS sends a data string each time a new serial input is received from the external serial device. This initiates the data transfer upon receipt of the delimiter or an overflow at its serial port.

The format of the message is the same as for a Poll response. Each message is handled in the same fashion, with respect to string delimiters, overflows, etc., regardless of which connection mechanism is used.

The purpose of these connections is to send data from the ASCII modules to the scanner without a direct command from the Master, thus conserving network bandwidth. The COS connection provides the Master with the current data as fast (or faster) than a Poll connection. The COS/Cyclic mechanism automatically activates when the connection is created.

The COS and Cyclic connections are mutually exclusive per DeviceNet definition - that is, you cannot use both of them at the same time. You can use each one, however, in conjunction with a Poll connection.

Setting Up the DeviceNet I/O Connections

It is useful to first set up your serial link before setting up your connection. To set up the communications with your network configuration tool, it is necessary to know the connection input and output sizes. Instructions for setting up your serial connection are provided above. See Table 2.3 for receive and transmit sizes.

The input and output sizes are computed from the transmit size and the receive sizes plus selected options. These sizes are defined in the parameter object of your device.

The transmit and receive sizes of the I/O connection are automatically computed for you by the ASCII module. You must set the maximum RX and TX sizes first and then choose apply. Upload the data to the ASCII module by clicking Upload. The scanner's I/O connection TX field should be set to the value of "Consume Assembly Size" parameter 23.

The RX size of the scanner should be set to the value of "Produce Assembly Size" parameter 13. If you are in the COS I/O connection and do not wish to transmit data out of the ASCII module, you may set the scanner's TX size to 0. This will only work with the COS/cyclic connection. You will see the best results if you do not allocate the poll and COS connections at the same time (you will conserve bandwidth). The best selection in regards to bandwidth conservation is the COS connection.

IMPORTANT

Remember to re-map the data (if necessary) after you set the sizes, because many configuration tools will automatically unmap your data when you change the connection sizes. If you are not using such a software package, it is probably not necessary to set up the transmit and receive sizes.

Setting Up the Connection Timer (EPR)

EPR stands for Expected Packet Rate. This is the timer value that the ASCII module uses for the cyclic and polled connection. This is also the value it uses in the connections to calculate the time the device should wait before signaling a timeout. If you have a scanner or scanning software, you must configure it with the EPR that you want the ASCII module to be scanned with.

The **scanner configures the EPR** in the ASCII module at the beginning of communications. Consult your scanner's manuals on how to configure the EPR.

TIP

EPR is automatically set via RSNetWorx for DeviceNet. However, if you need to set up the EPR manually, perform a set (Service 10_{hex}) on the connection class (Class 5_{hex}) attribute 9. The polled connection uses instance 2, where as the COS and cyclic connections use instance 4. This must be done after allocating the connection.

Operating Mode Selections

The ASCII module has several different operating modes, some of which are available only in certain combinations. Major options are summarized below, with additional details provided in chapter 2.

Transmit Handshake vs. Transmit Immediate Option

This option defines when the ASCII module transmits data out of its serial port.

With **Transmit Handshake** active (default), the ASCII module keys on the second byte (TX Transaction ID) of the poll command or explicit message to determine whether or not the consumed data from the DeviceNet Master is to be transmitted out the serial port. While this TX ID is static, the module will not transmit the command data. Upon sensing a change in value of the TX ID byte, the module transmits the data. It will initiate one serial transmission for each change in the TX ID value, regardless of the data string value.

In **Transmit Immediate** mode, the ASCII module ignores the TX ID byte value and initiates a new serial port transmission with each message received from DeviceNet.

TIP

Care should be taken when selecting this option for I/O messaging. See page 2-24 for details.

These actions take place with either a Poll command or an explicit message that writes to the consume assembly object or the serial port object.

Produce Immediate vs. Master/Slave Handshake Option

This option defines when the ASCII module sends new data to the DeviceNet Master (produces new data on DeviceNet).

In **Produce Immediate** mode (default), the ASCII module sends its most current serial port data to the DeviceNet Master in response to each Poll command or explicit message, or in response to a COS or Cyclic event.

With **Master/Slave Handshake** active, the ASCII module keys on the first byte (Next RX ID) of the Poll command or explicit message to determine whether or not the new data from its serial port is sent to the DeviceNet Master. This technique is useful when the Master needs to ensure that some specific actions have taken place before receiving the new serial data.

In this operating mode, the module sets the New Data Flag in its Serial Status byte when a new string is received into the serial port. When the Master is ready to receive the new data, it changes the value of the Next RX ID byte in the next Poll command or explicit message. Upon detection of the Next RX ID value change, the module updates its produce buffer with the most recent serial input string.

Pad vs. No Pad Option

If the **Pad** option is selected (default), the ASCII module will always send a fixed number of data bytes to the master. It is typically used when a Terminating Character trigger is used to stop receiving ASCII data. This is useful if the ASCII device connected to the ASCII module has varying data lengths and the master cannot accept varying length I/O messages. The ASCII module will fill a short message with the pre-defined Pad Character. The data length is defined by the Max Receive Length parameter.

If the **No Pad** option is selected, the ASCII module's produce I/O message will resize itself to the length of the received ASCII data. This conserves bandwidth, but will cause scanners that do not support variable I/O sizes to malfunction. Do not turn off Pad Mode if you do not have (or do not know if you have) a scanner that supports variable I/O sizes. Pad Mode is ON by default.

Notes:

Configuring Your ASCII Module

About Communications

The ASCII modules have DeviceNet-to-serial link communication that provides a flexible DeviceNet interface to a wide variety of ASCII devices. Used with the POINT I/O system, these modules allow you to easily and conveniently connect and integrate peripheral products with RS-232, RS-485, or RS-422 serial ports into a DeviceNet system.

Data can be exchanged with the master through a polled, cyclic, or change-of-state connection. Bit-Strobe Command Response Messaging and the Unconnected Message Manager (UCMM) are not supported¹. The module produces and consumes data as follows:

Table 2.1 Produce/Consume Data

I/O Connection Type	Consumes	Produces
Polled ^A	4-132 bytes	4-132 bytes
Cyclic ^A	4-132 bytes	4-132 bytes
Change of State ^A	4-132 bytes	4-132 bytes

A Default values are 24 bytes.

¹ If you are not familiar with these terms, see the DeviceNet Specification for definitions (online: www.odva.org).

ATTENTION

The ASCII modules are not compatible with the 1734-APB PROFIBUS adapter.



Configuration Overview

You must use the RSNetworkx for DeviceNet software to configure your module. You can configure the module while it is:

- online

or

- offline

This chapter shows configuration in the online mode. Configuration screens appear similar in both modes. The primary difference is that if you make changes offline, you must go online before the configuration changes take effect.

You can also configure the module using Autostart Mode.

IMPORTANT

You must configure the maximum transmit and receive sizes (parameters 17, 3) *before* using Autostart Mode if you wish to transmit or receive more than 20 characters (default) as these parameters affect the I/O message sizes on DeviceNet.

Understanding Auto Start Mode

Auto Start Mode offers you a quick and easy method of getting your POINT I/O system 'up and running'. If your POINT I/O application can use default configuration (see the parameters described in the POINT I/O 1734-ADN DeviceNet Adapter User Manual, publication 1734-UM002), you should use Auto Start Mode to easily begin operations.

What Does Auto Start Mode Do?

When using Auto Start Mode, the adapter:

1. Sets all modules on the backplane to Auto Baud.
2. Reads module IDs on the backplane.
3. Sets modules addresses sequentially.
4. Generates a scanlist for the backplane.
5. Maps I/O data, based on byte, word and double-word boundaries.

When this sequence of events is completed, the POINT I/O modules connected to the adapter are ready to accept connections from a scanner.

Although Auto Start Mode allows your adapter to operate with a default configuration, you can write a custom configuration after operation has begun.

For more information on how to write custom configuration for your adapter on DeviceNet, see the POINT I/O 1734-ADN DeviceNet Adapter User Manual, publication 1734-UM002, Chapter 5, Configuring the 1734-ADN Adapter for DeviceNet.

Are There Any Requirements to Using Auto Start Mode?

There are two **requirements** to using the Auto Start Mode:

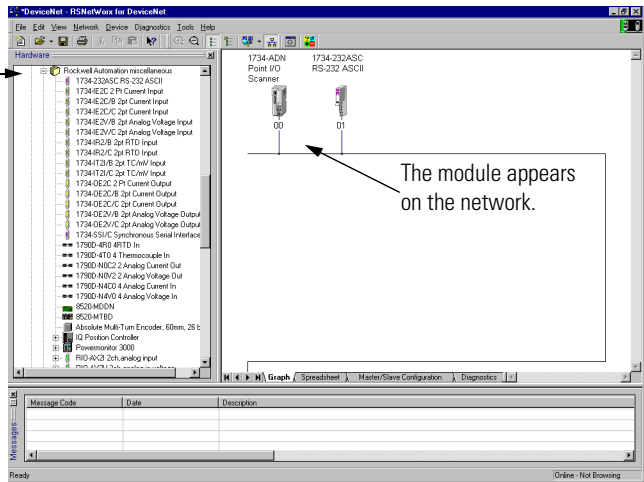
- Your 1734-ADN DeviceNet adapter must use firmware revision 2.001 or higher. If your adapter does not have the required firmware, you can upgrade it with the ControlFlash tool. For more information on how to upgrade your adapter's firmware, contact your Rockwell Automation representative.
- Your 1734-ADN DeviceNet adapter must be free of I/O connections on DeviceNet when you use Auto Start Mode. If another scanner device has established I/O connections with the adapter, the attempt to use Auto Start Mode is rejected. Also, when the adapter is configuring itself in Auto Start Mode, no other device can establish I/O connections to the adapter.

Adding the ASCII Modules to Your Network

Follow these steps:

1. Start the RSNetwork for DeviceNet software.
2. Add the communication device as shown below. (In this case, the chosen device was a 1734-ADN DeviceNet adapter.)

1. Click here to expand the list of communication adapters.
2. Double-click on the 1734-ADN DeviceNet adapter. You can also click and drag the adapter name onto the network.



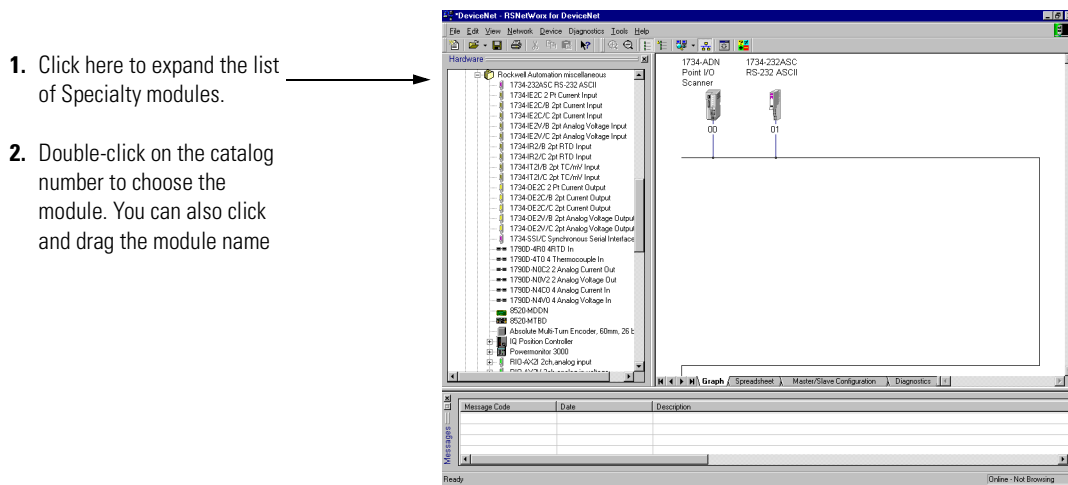
IMPORTANT

The adapter must always exist on the DeviceNet network at Node 00.

Adding I/O Modules to Your Network

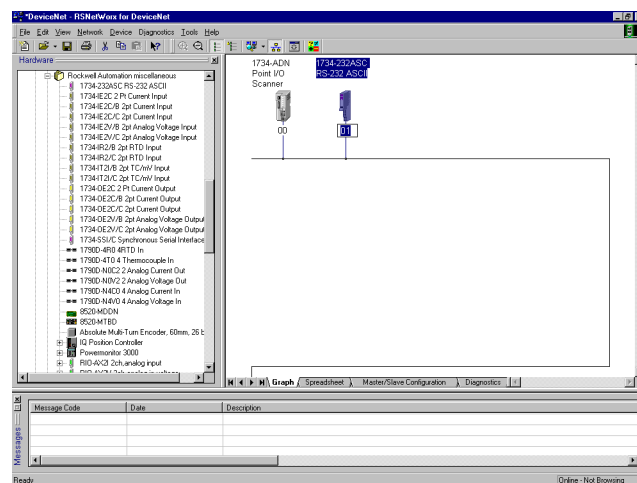
After you add the communication device, you must add the POINT I/O modules connected to the scanner on the PointBus.

1. Add modules as shown below.



The out-of-the-box node setting for 1734 modules is 63. You can change the setting by using the node commissioning tool. The node commissioning tool is available either online or offline.

2. Double-click on the module to change the node address.



Setting the ASCII Module's Parameters

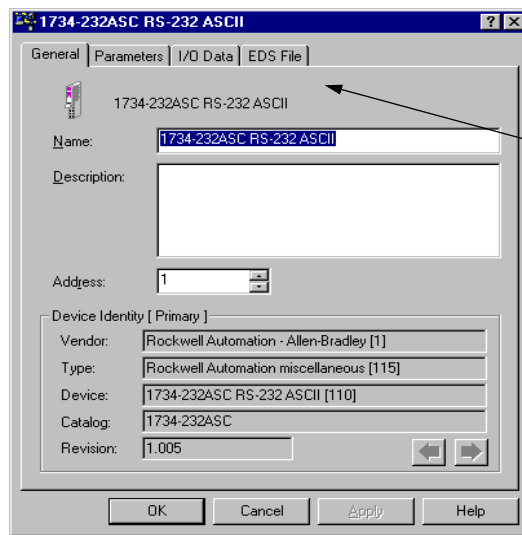
After adding the module to the network, you must configure the module for use. The 1734-232ASC and -485ASC modules are configured identically.

IMPORTANT

This chapter shows configuration in the online mode. Changes set in this mode take effect when you download to the individual module.

1. Configure the modules by right-clicking on the module and choosing properties, or double-clicking on the module.

You will see a pop-up screen with a series of tabs. Each tab provides options view or edit. The tabs are shown below and on the following pages.



These are the tabs you click on to view the options.

Refer to the screens below for an explanation of its features.

The module's name appears here.

Type a description here.

The module's address appears here. You can change the node address if necessary.

This screen also shows the module's device identity. These fields are read-only.

Click on the Device parameters tab to get to the screen for setting the parameters.

At any point, you can click here to finish changing configuration parameters.

IMPORTANT: If configuration changes are made in offline mode, they do not take effect until the system goes online.

This screen appears after clicking on the Device parameters tab. If you want the existing parameters uploaded from the module, select Upload. The following screen will then show the existing parameters set on the module.

Use this pull-down menu to edit or view the parameters. Available choices are:

PointBus

Configuration

When you have finished configuring your parameters, download to your module by clicking on the Download to Device button. You can download each change as you make it using "Single," or download all your changes using "All."

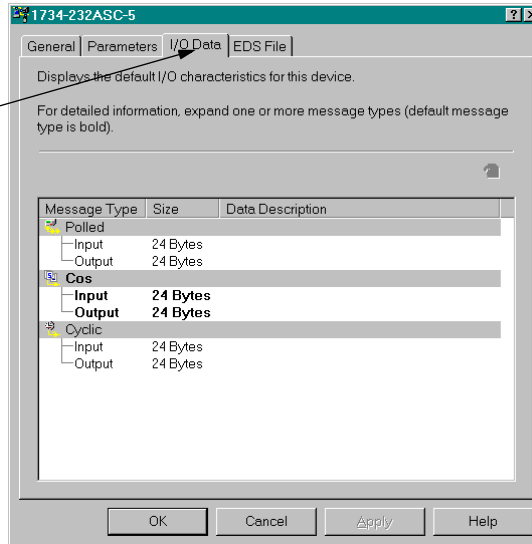
Checking I/O Status and Viewing the EDS File

You can view the I/O data setup, and the EDS file by clicking on the appropriate tab.

Click on the I/O Defaults tab to display the default characteristics for this module.

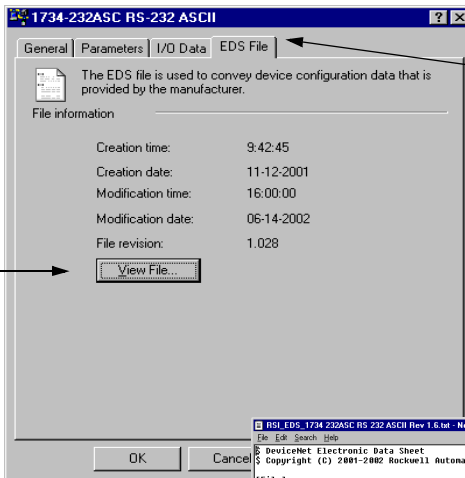
This screen shows the input/output defaults for the four modes. These are:

- Strobe
- Polled
- Change of state and
- Cyclic

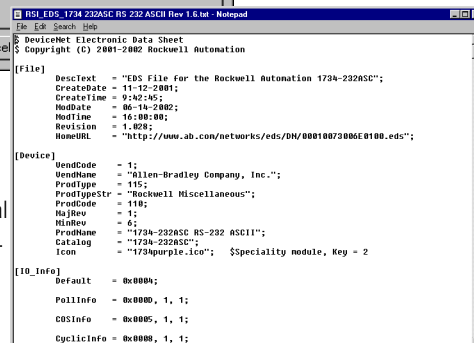


Click on the EDS File tab to display the statistics of the EDS file used to configure this module.

Click on View File to view the actual EDS file (shown at the left).



You can view the actual EDS file or edit the file.



Configuration Assembly

The ASCII modules support a configuration assembly, that is accessed through the Assembly Object (Class 4), Instance 103. The configuration assembly is 18 bytes.

Table 2.2 Configuration Assembly

Byte	Parameter	Parameter Instance (See Table 2.3)
0	ASCII Serial Character Format	1
1	ASCII Serial Comm Speed	2
2	ASCII Max Number of Receive Characters	3
3	ASCII Receive Record Start Mode	4
4	ASCII Receive Start Delimiter	5
5	ASCII Receive Record End Mode	6
6	ASCII Receive End Delimiter	7
7	ASCII Receive String Data Type	8
8	ASCII Pad Mode	9
9	ASCII Pad Character	10
10	ASCII Receive Swap Mode	11
11	DeviceNet Handshake Mode	12
12	ASCII Max Number of Transmit Characters	17
13	ASCII Transmit End Delimiter Mode	18
14	ASCII Transmit End Delimiter Character	19
15	ASCII Consume String Data Type	20
16	ASCII Transmit Swap Mode	21
17	DeviceNet Record Header Mode	22

Parameter List

Use this table for information on configuring your ASCII module's parameters.

Table 2.3 Parameter List

Parameter	Parameter Instance	Access	Description	Parameter Choices	Default Setting	Default Value	Data Type
Serial Port Parameters							
Serial Character Framing	1	Get/Set	Defines the number of data bits, stop bits and parity in data character frames	0 = 7N2 1 = 7E1 2 = 7O1 3 = 8N1 4 = 8N2	5 = 8E1 6 = 8O1 7 = 7E2 8 = 7O2	7N2	0 USINT
Serial Port Comm Speed	2	Get/Set	Defines the baud rate of the serial port	0 = 9600 1 = 1200 2 = 2400	3 = 4800 4 = 19.2k 5 = 38.4k	9600 baud	0 USINT
Serial Port Receive from ASCII Device							
Max Number of Receive Chars	3	Get/Set	Maximum number of characters the 1734-232ASC module expects to receive into its ASCII port from the serial device	1-128	20 chars	20	USINT
Receive Record Start Mode	4	Get/Set	Selects whether or not the start delimiter is included with the receive data	0 = No Start Delimiter 1 = Exclude Start Delimiter 2 = Include Start Delimiter	No Start Delimiter	0	USINT
Receive Start Delimiter	5	Get/Set	Character which identifies the beginning of the data string from the ASCII device when the length is specified as 0	Any valid standard ASCII character (0-127, 0-255)	Colon	0x3A	USINT
Receive Record End Mode	6	Get/Set	Selects whether or not the End delimiter is included with the received data	0 = No End Delimiter 1 = Exclude End Delimiter 2 = Include End Delimiter	Include End Delimiter	2	USINT
Receive End Delimiter	7	Get/Set	Character which identifies the end of the data string from the ASCII device when the length is specified as 0	Any valid standard ASCII character (0-127, 0-255)	Carriage return	D _{hex}	USINT

Table 2.3 Parameter List

Parameter	Parameter Instance	Access	Description	Parameter Choices	Default Setting	Default Value	Data Type
Send (Produce) on DeviceNet to Master							
Receive String Data Type	8	Get/Set	Defines the format of the data string to the master	0 = Array 1 = Short_String 2 = String	Short_String	1	USINT
Pad Mode	9	Get/Set	Indicates whether to pad the invalid data region after the delimiter with the pad character, or to use variable length I/O responses	0 = Pad Mode Disabled 1 = Pad Mode Enabled	Enabled	1	USINT
Pad Character	10	Get/Set	Value to use to pad the invalid data portion of the poll response	Any valid standard ASCII character (0-127, 0-255)	NULL	0	USINT
Receive Swap Mode	11	Get/Set	If enabled, the position of the bytes in the serial messages will be swapped every 2, 3 or 4	0 = Disabled 1 = 16-bit Swap Enabled 2 = 24-bit Swap Enabled 3 = 32-bit Swap Enabled	Disabled	0	USINT
Master/Slave Handshake Mode	12	Get/Set	If enabled, master must acknowledge it is ready for next new data before 1734-232ASC module sends the new data.	0 = Master/Slave Handshake 1 = Produce Immediate	Produce Immediate	1	USINT
Produce Assembly Size	13	Get	Total number of bytes of I/O data that are sent to the master from the 1734-232ASC module. This should be the RX size of your scanner.	4-132	20 bytes of array data and 4 header bytes	24	USINT
Serial Data	14	Get	Serial data in the receive buffer	Any data string 0-128 bytes long	Empty	Empty	SHORT_STRING
Receive Data Size	15	Get	Number of characters in the Receive data buffer	0-128	0	0	USINT
Receive transaction ID	16	Get/Set	The Receive transaction ID sent from the master	0-255	0	0	USINT

Table 2.3 Parameter List

Parameter	Parameter Instance	Access	Description	Parameter Choices	Default Setting	Default Value	Data Type
Serial Port Transmit to ASCII Device							
Max Number of Transmit Chars	17	Get/Set	Maximum number of characters the 1734-232ASC module expects to transmit out its serial port to the serial device	1-128	20 chars	14 _{hex}	USINT
Transmit End Delimiter Mode	18	Get/Set	Selects whether or not the End delimiter is included with the received data	0 = No End Delimiter 1 = Exclude End Delimiter 2 = Include End Delimiter	Include	2	USINT
Transmit End Delimiter Character	19	Get/Set	Character which identifies the end of the transmit data string from DeviceNet to the ASCII device when the length is specified as 0	Any valid standard ASCII character (0-127 with 7-bit data, 0-255 with 8-bit data)	Carriage return	D _{hex}	USINT
Consume on DeviceNet from Master							
Consume String Data Type	20	Get/Set	Defines the format of the data string received from the master	0 = Array 1 = Short_String 2 = String	Short_String	1	USINT
Transmit Swap Mode	21	Get/Set	If enabled, the position of the bytes in the serial messages will be swapped every 2 or 4 bytes	0 = Disabled 1 = 16-bit Swap Enabled 2 = 24-bit Swap Enabled 3 = 32-bit Swap Enabled	Disabled	0	USINT
Transmit Handshake Mode	22	Get/Set	Selects the source of the event that triggers the transmission of data over the serial link	0 = Transmit Handshake 1 = Transmit Immediate	Transmit Handshake	0	USINT
Consume Assembly Size	23	Get	Total number of bytes of I/O data that are received from the master. This should be the TX size of your scanner.	4-132	20 bytes of array data and 4 header bytes	24	USINT

Table 2.3 Parameter List

Parameter	Parameter Instance	Access	Description	Parameter Choices	Default Setting	Default Value	Data Type
Serial Port Transmit/Explicit Messages from Configuration Tool							
Transmit Serial Data String	24	Get/Set	Serial data to be sent to the serial transmit buffer	ASCII Block Data 0-128 bytes long	Empty	Empty	SHORT_STRING
Transmitted Serial Data Length	25	Get/Set	Length of the Transmit Serial Data	0-128	0	0	USINT
Transmit transaction ID	26	Get/Set	The transaction ID of the current transmit data buffer	0-255	0	0	USINT
Status	27	Get	The Combined status byte for the Serial Port Object, the Receive Record object and the Transmit Record object.	1 = TX FIFO Overflow 2 = RX FIFO Overflow 4 = RX Parity Error 64 = Handshake Error 128 = New Data Flag	No Status	0	USINT
POINTBus Options							
Autobaud	28	Get	Autobaud allows the module to match the baud rate of existing devices on a network. Changes to this attribute take effect after the next powerup. If 'Enabled', the Baud Rate Attribute cannot be set.	0 = Enable 1 = Disable	Enable	1	USINT

Table 2.3 Parameter List

Parameter	Parameter Instance	Access	Description	Parameter Choices	Default Setting	Default Value	Data Type
Sequential AutoAddress	29	Get	Sequential AutoAddress will reassign the node address of every module to the right. Each module will change it's node address to one greater than it's neighbor. Make sure the node address of this module is the desired value before issuing this command. When the command is set, each module to the right will get a new address one greater than it's neighbor.	0 = Do Nothing 1 = Sequential Address	Do Nothing	0	USINT
Broadcast Baud Rate	30	Get	This command will change the baud rate of this and every module to the right to the value indicated. If AutoBaud is ENABLED, this command will not change the operation of the module at power up.	0 = Do Nothing 1 = 125k Hz 2 = 250k Hz 3 = 500k Hz	Do Nothing	0	USINT
Broadcast AutoBaud	31	Get	This command will change the AutoBaud attribute of this and every module to the right to the value indicated. If AutoBaud is 'disabled', the Baud Rate parameter will set the baud rate the next time the module is powered up.	0 = Do Nothing 1 = Enable 2 = Disable	Do Nothing	0	USINT

POINT I/O Parameters

Receiving Serial Data from the ASCII Device

The ASCII modules receive a number of characters and transmits these to the DeviceNet master via:

- I/O - poll, COS, or cyclic messages
- explicit message

The received character string is captured when:

- the specific number of bytes defined (Receive Character Buffer Length) is received, or
- the defined End-of-String Terminator character is detected.

When either of these events occur, the ASCII modules store the received message string into its internal buffer and will then transmit (produce) it onto DeviceNet at the next appropriate opportunity.

Setting Up the Receive Character Buffer Length

The Receive Character Buffer Length is the number of characters that the ASCII modules can receive from your I/O device into its buffer at one time. The length of the data string sent to the DeviceNet master is less than or equal to this size, plus the 4-byte header.

If the module receives more characters than this number, it will internally generate an overflow and force the data into the ASCII module DeviceNet transmit buffer to be sent to the master.

The subsequent received characters will then be received into the buffer and handled at the start of the next incoming message string. The overflow bit in the status byte will be set as well.

IMPORTANT

Incoming characters could be missed in the process of handling a string longer than the defined max length.

This value can be set and retrieved by using the standard set and get services on class 15 (F_{hex}), instance 3, attribute 1.

Setting Up and Using Pad Mode

Pad Mode operation adds extra characters to the end of its received data string (after the delimiter character). These characters are added from the external I/O device before sending the string to the DeviceNet scanner (master) as an I/O response.

The quantity added is such that the data string returned to the scanner is always a constant length, and that length is the number specified in the maximum Receive Character Length parameter plus the 4-byte header. The quantity of pad characters sent can vary from message to message, depending upon the size of the incoming string.

Pad Mode Selection

Pad Mode allows for compatibility with scanners that cannot receive variable length I/O messages. For such scanners, you must turn Pad mode ON (a value of 1). Turning Pad mode ON will not harm Scanners that do support variable length receive messages.

The default value for Pad Mode is ON. If your scanner does support variable I/O messaging lengths, you may turn OFF the Pad Mode option (a value of 0) to conserve some network bandwidth.

The selection of Pad Mode is valid only for the DeviceNet message that the ASCII module produces. It has no effect on DeviceNet messages sent from the scanner to the ASCII module. This value can be set and retrieved by using the standard set and get services on class 15 (F_{hex}), instance 9, attribute 1.

Pad Mode Character

The ASCII modules allow you to specify the character that Pad Mode uses to pad the received serial data. This can be set to any valid I/O value (0-127 in 7 bit modes, 0-255 in 8 bit modes). This value can be set and retrieved by using the standard set and get services on class 15 (F_{hex}), instance 10, attribute 1.

Setting Up and Using the Swap Bytes Mode

This option may be helpful if the ASCII module is connected to a DeviceNet scanner that organizes the data string characters into data type elements that are larger than 1 byte each (i.e. SLC500). In such cases, the bytes of the data in the master's memory organization can be reversed from the order in which they are sent or received on the DeviceNet and the serial link to the ASCII device. This may cause errors in some cases. Thus, the received string "ABCDEFGH" may appear in memory as "BADCFEHG" for 2-byte word organization, and "DCBAHGFE" for 4-byte word organization.

Transmit Byte Swapping

By setting Parameter 21 (class F_{hex}, instance 21, attribute 1), the bytes from the master will be swapped by the ASCII module before transmitting the string to the ASCII device.

Receive Byte Swapping

By setting Parameter 11 (class F_{hex}, instance 11, attribute 1), the ASCII module will re-order the bytes received from your ASCII device before sending the string to the master.

Maximum Number of Receive Characters Parameter Rules for Usage

- Swap Bytes Mode is set for transmit and receive independently.
- The byte swapping works best if the max RX and TX lengths are multiples of the byte-swap size.

Setting Up and Using Delimiter Operation

When receiving data strings from your serial device, the ASCII module can take advantage of both Start and Stop (End) delimiters. The Start Delimiter is the start-of-string indicator and the End Delimiter is the end-of-string indicator.

When you select Start Delimiter operation, you define a character that prompts the ASCII module to start storing the incoming data string. All characters up to this Start Delimiter (after the previous message was completed) are ignored. Once the Start Delimiter is received, all characters are stored until either the End Delimiter is received or the `Max_Receive_Char_Length` is reached. Once the End Delimiter is reached, the data string is updated and the ASCII module will ignore all subsequent data until the start delimiter is received again.

If either delimiter is used, you also can elect whether or not to include those characters in the data string. If the start delimiter mode is set to Disabled, then the ASCII module will always add data to the string.

Receive String Data Type

Receive String Data Type is the format of the data – array, `short_string` or `string` – you will send to the DeviceNet master. Which one you choose depends on your application, and will modify the format of the header field in the data string.

The Array data type does not have a length associated with it. It is equivalent to specifying a length of zero using a `String` or `Short_String` data type.

The `Short_String` data type is the default data type of the device. This will suffice for most applications. The `Short_String` data type value has only one byte of length, and the rest of the data bytes are appended after the length.

The `String` data type value has two bytes of length. The `String` data type is useful in talking to some PLCs or other devices that have a data file specifically made to handle this data type. The length is little endian (low byte, high byte), and the high-order byte will always be set to zero. The ASCII module will receive up to 128 bytes of information, so the extra byte, although required for this data type, is always 0. Refer to Tables 2.4 through 2.6 below.

Table 2.4 Receive Data Format - Array Data Type

Byte 1	Byte 2	Byte 3	Byte 4	Byte 5-X	Byte X+1 (Max = 132)
RX Transaction ID Byte	Status Byte	Reserved	Reserved	ASCII Data (max 128 bytes)	<CR> (Terminator)

Table 2.5 Receive Data Format - Short String Data Type

Byte 1	Byte 2	Byte 3	Byte 4	Byte 5-X	Byte X+1 (Max = 132)
RX Transaction ID Byte	Status Byte	Reserved	Length	ASCII Data (max 128 bytes)	<CR> (Terminator)

Table 2.6 Receive Data Format - String Data Type

Byte 1	Byte 2	Byte 3	Byte 4	Byte 5-X	Byte X+1 (Max = 132)
RX Transaction ID Byte	Status Byte	Length (Low Byte)	Length (High Byte)	ASCII Data (max 128 bytes)	<CR> (Terminator)

Setting Up the Scanner I/O Receive Size

The ASCII modules automatically calculate the number of bytes it will send to the DeviceNet master. Its value is determined by a combination of the incoming data and the options you have selected. Parameter 13 defines the size of the DeviceNet message to be sent by the ASCII module to the master.

IMPORTANT

You must set your scanner's RX (receive) value to this number of bytes.

IMPORTANT

You must upload this data from the ASCII module to view current information or put your RSNetWorx for DeviceNet into Monitor Mode.

Explicit Messages to Receive the Serial Data String

Parameters 14, 15, and 16 contain the status of the most recent incoming serial data string. You can use the data to read your device's ASCII data via the explicit messaging technique.

Parameter 14 holds the most recent received data. Parameter 15 defines the size (in bytes) of the DeviceNet message to be sent by the ASCII module to the master. Parameter 16 holds the transaction ID of the data string in Parameter 14 if the Header option is selected.

IMPORTANT

You must upload this data from the ASCII module to view current information or put your RSNetWorx for DeviceNet into Monitor Mode.

Status Byte Description

The Serial Status byte is an OR'd bit field of a number of status and exception flags.

Table 2.7 Serial Status Byte

Bit	Exception
0	TX Buffer Overflow
1	RX Buffer Overflow
2	RX Parity Error
6	Handshake Error
7	New Data Flag

TX Buffer Overflow (Bit 0)

The transmit queue has overflowed resulting in a loss of data. The transmit I/O is full of data waiting to be transmitted. Some of the data added has been lost. When space becomes available in the TX, this bit will be reset.

RX Buffer Overflow (Bit 1)

The receive queue has overflowed resulting in a loss of data. The receive is full of data waiting to be processed. The data has been lost. When space becomes available in the RX, this bit will be reset.

RX Parity Error (Bit 2)

This bit is set if a parity error is detected on the received data.

Handshake Error (Bit 6)

This error will occur only in Master-Slave Handshake Mode. It indicates that the master has requested a new data record from the ASCII module, but the ASCII module has not indicated new data is available to be sent.

New Data (Bit 7)

This bit is used only when the Master-Slave Handshake option is active. When the ASCII module receives a new data string into its serial port, it sets this flag in its DeviceNet response message. The bit will remain set until the master changes the RX ID Byte in its produced data.

Transmitting Serial Data to the ASCII Device

In order to transmit data to your serial device, the data must first be sent to the ASCII module and then the ASCII module must send the data to the serial device.

The ASCII module transmits a number of characters from the DeviceNet master to your serial device via:

- I/O messages
- explicit message

The received character string is transmitted to your serial device when:

- the specific number of bytes defined (Transmit Character Buffer Length) is received, or
- the defined End-of-String Terminator character is detected and active.

When either of these events occur, the ASCII module stores the DeviceNet string data into its internal buffer and then transmits it out its serial port.

Setting Up the Transmit Character Buffer Length

The Transmit Character Buffer Length is the number of characters that the ASCII module can receive in its transmit buffer from the DeviceNet network. This size contributes to the I/O's consume size. This size can be found in the Parameter object.

Setting Up and Using the Transmit Delimiter

The Transmit Delimiter is an end-of-string character that determines how many bytes to transmit over the serial link to your ASCII device.

IMPORTANT

This Transmit Delimiter will be used only if the length is 0. If this length is not 0, the ASCII module will ignore the transmit delimiter and will send the define number of characters.

The ASCII module will transmit up to and (optionally) including the delimiter when the above condition is met. The Transmit Delimiter can be set to any valid binary value. Be careful not to set the delimiter to a value outside of the valid range for your data bits. (A data bit size setting of 7 will only allow you a delimiter range of 0-127 dec., 00-7F_{hex}.)

If the length is 0 and if you do not have a valid delimiter in your string, the module will send all data characters from the I/O field to your serial device.

Transmit String Data Assemblies

Transmit String Data Assemblies are the formats of the data you will send from the ASCII module – array, short_string or string – to the DeviceNet master. Which one you choose depends on your application, and will modify the format of the data field.

Table 2.8 Transmit Data Format - Array Data Type

Byte 1	Byte 2	Byte 3	Byte 4	Byte 5-X	Byte X+1 (Max = 132)
Next RX ID Byte (Handshake Mode Only)	Transaction ID Byte	Reserved	Reserved	ASCII Data (max 128 bytes)	End of String Delimiter or Last Data Byte

Table 2.9 Transmit Data Format - Short_String Data Type

Byte 1	Byte 2	Byte 3	Byte 4	Byte 5-X	Byte X+1 (Max = 132)
Next RX ID Byte (Handshake Mode Only)	Transaction ID Byte	Reserved	Length	ASCII Data (max 128 bytes)	End of String Delimiter or Last Data Byte

Table 2.10 Transmit Data Format - String Type

Byte 1	Byte 2	Byte 3	Byte 4	Byte 5-X	Byte X+1 (Max = 132)
Next RX ID Byte (Handshake Mode Only)	Transaction ID Byte	Length (LSB)	Length (MSB)	ASCII Data (max 128 bytes)	End of String Delimiter or Last Data Byte

Transmit Handshake vs. Transmit Immediate Mode

This option defines when the ASCII module transmits data out its serial port. Transmit Handshake mode is used primarily in Polled I/O to prevent the ASCII module from repeatedly sending its data buffer to the serial device each time an I/O command is received.

With **Transmit Handshake** active (default), the Master will change the TX Transaction ID value in the message header whenever it wants the ASCII module to send a serial string to the target serial device. The module monitors the second byte (TX Transaction ID) of the Poll command or explicit message to determine whether or not the consumed data from the DeviceNet master is to be transmitted out the serial port.

The module will not transmit the command data until it receives a new TX ID value. Upon sensing a change in value of the TX ID byte, the module transmits the data. It will initiate one serial transmission for each change in the TX ID value, regardless of the data string value.

In **Transmit Immediate** mode, the ASCII module ignores the TX ID byte value and initiates a new serial port transmission with each message received from DeviceNet. This technique can be useful when the target ASCII device is not affected by receiving the same data multiple times and operates quickly enough so that message overflows do not occur. This option may be most useful with explicit messages.

These actions take place with either a Poll command or an explicit message that writes to the consume assembly object or the serial port object.

A transmission of the serial data from the ASCII module to your ASCII device can be initiated in two ways. If an I/O connection is used, serial data in the mapped I/O location will be sent to the ASCII module on every I/O command (repeatedly at the same interval of the DeviceNet scanner).

- In Transmit Handshake Mode, changing the transaction ID will always initiate a transmission on the network. Even if you do not set new data into the data string, the old data will be transmitted.
- In Transmit Immediate Mode, the ASCII module will transmit data out its serial port every time it receives an I/O command or explicit message to its transmit buffer or changes the transaction ID.

ATTENTION

An I/O message is repeatedly sent and generates internal writes to Class 71, Instance 1, attribute 3. This will cause you to send large amounts of data to your device and can cause TX Buffer Overflows. You may experience corrupted data and improper information sent to your serial device when using data only mode with I/O messaging.

ATTENTION

You should take care when activating Transmit Immediate mode while I/O Polling is active. In this mode of operation, the module will continuously transmit serial data to the target serial device. If the data string represents a command message to your target device, these actions could result in unintended misoperation of your device or system.

Transmitting Serial Data

The length of the string sent determines the use of a delimiter in transmitting data to a serial device from the ASCII module.

- If the string length is zero (as dynamically defined by the third and fourth bytes in the message header), or if the data type is Array:

The ASCII module receives data sent from the DeviceNet master and uses the delimiter to determine how much data is sent to the serial device. The ASCII module will compute the length and then store this as the new length in the string attribute. (This will not show up if the data type is array, you will just see the string truncated, and the length will be in the background.)

- If the string length > 0 or the data type is String or Short_String:

The ASCII module receives data sent from the DeviceNet master ignoring any embedded terminator. It will store the number of characters defined in Max_Number_of_Transmit_Chars, or the total sent by the master, whichever is less.

The ASCII module will send the information immediately in Transmit Immediate mode. You can always cause the data to be transmitted by changing the TX ID.

Setting Up the Scanner I/O Transmit Size

The ASCII module automatically calculates the number of bytes it will receive from the DeviceNet master. Its value is determined by a combination of the incoming data and the options you have selected. Parameter 23 defines the size of the DeviceNet message to be sent to the ASCII module from the master and should be set as the Tx size in your Scanner's I/O set-up.

IMPORTANT

You must set your scanner's Tx (transmit) value to this number of bytes. Remember to upload this data from the ASCII module to current information or put your RSNetWorx for DeviceNet into Monitor Mode.

Produce Immediate vs. Master/Slave Handshake Mode

Selecting the mode option defines when the ASCII module sends new data to the DeviceNet Master (produces new data on DeviceNet).

In **Produce Immediate** mode (default), there is no gating by the ASCII module of data sent from the ASCII module to the DeviceNet Master. The module sends its most current serial port data to the Master in response to each Poll command or explicit message, or in response to a COS or Cyclic event. It is the Master's responsibility to be ready to accept and process new data strings as they are received.

In **Master/Slave Handshake** mode, the ASCII module refrains from updating the new ASCII data until the Master requests it. This technique is useful when the Master needs to ensure that some specific actions have taken place before receiving the new serial data.

IMPORTANT

Master/Slave Handshake mode is only available if the Transmit Immediate mode is also active.

When Master/Slave Handshake mode is active, two data fields in the message headers are used to initiate and complete the transaction:

- The **New Data Available Flag** is set in the serial status byte of the ASCII Poll response message.

This informs the Master that a new data string has been received and the module is waiting for the OK from the Master to send it.

- The **Next RX ID** byte is updated by the Master to the ASCII module that it is now ready to receive the new data string.

Table 2.11 ASCII Modules Consume Assembly Message with Handshake Mode (Short_String)

Byte 1	Byte 2	Byte 3	Byte 4	Byte 5-X	Byte X+1 (Max = 132)
Next RX ID Byte (Handshake Mode Only)	Transaction ID Byte	Reserved	Length	ASCII Data (max 128 bytes)	End of String Delimiter or Last Data Byte

The master monitors the new data flag and when the master is ready to receive new serial data, it sets a new number in the new RX ID byte of the I/O message. Note that this applies only to data being sent from the ASCII module to the master.

The operation proceeds as follows:

- The ASCII module receives a new data string.
- The ASCII module sets the New Data Flag in the Status byte of its next produce message.
- When the master is ready to receive the new data string, it changes the next RX ID byte to any value different than what it had been sending.
- The ASCII module will send the new data when the next RX ID Byte changes. The ASCII module will reset the new data available bit.
- If the next RX ID byte changes and the module has no new data, it will set the Handshake Error bit in its Produce Status byte.

Note that you can set the **Next RX ID** byte to any value. It may reflect the RX Transaction ID byte sent from the module, if desired, or any other meaningful number. The ASCII module only looks for a change from the value since it set the New Data Flag.

Explicit Messages to Transmit Serial Data String

You can use Parameters 24, 25 and 26 to set up the serial data string and send it to your ASCII device via the Explicit Messaging technique.

Parameter 24 will hold the data you wish to send.

Parameter 25 defines the size, in bytes, of the DeviceNet message to be sent from the ASCII module to the device.

Parameter 26 holds the transaction ID of the data string in Parameter 24 if the Header option is selected. Changing the record will cause the data in Parameter 24 to be transmitted immediately from the master to the ASCII module.

TIP

This is for non-runtime only. Use Class 71, and 72 for runtime operation.

Diagnostics

Using the Indicators for Troubleshooting

Use these indicators to help you troubleshoot any problems with your ASCII modules.

RS-232



Module Status
Network Status

RS-485



Module Status
Network Status

Table 3.1 Module Status Indicators

Indication	Probable Cause
Module Status	
Off	No power applied to device.
Green	Device operating normally.
Flashing Green	Device needs commissioning due to configuration missing, incomplete or incorrect.
Flashing Red	Recoverable fault.
Red	Unrecoverable fault may require device replacement.
Flashing	Device is in self-test.
Red/Green	

Table 3.2 Network Status Indicators

Indication	Probable Cause
Network Status	
Off	Device is not on-line. - Device has not completed dup_MAC_id test. - Device not powered - check module status indicator.
Flashing Green	Device is on-line but is not allocated to a master.
Green	Device on-line and has connections in the established state.
Flashing Red	One or more I/O connections in timed-out state.
Red	Critical link failure - failed communication device. Device detected error that prevents it communicating on the network.

Table 3.3 Transmit/Receive Indicators

Indication	Probable Cause
Transmit/Receive Status	
Flashing Transmit/ Off Receive	Check wiring, ground, and RX connection. Use parameter object to view transaction IDs.
Flashing Receive/ Off Transmit	Check wiring. Watch TX light. If it does not flash, check that you are properly initiating transmission. Use EDS parameter object to try transmitting and watch the light. If it flashes, you are not properly initiating transmission via I/O messaging. If it does flash, check the remote device.
Off Transmit/ Green Receive	Check connections as you may have wired the device backwards.

Specifications

Specifications for the ASCII Modules

Specifications - 1734-232ASC, -485ASC Modules	
Number of Inputs	1 full duplex
Input Voltage "0", Asserted, ON, Space, Active "1", Disasserted, OFF, Mark, Inactive	Signal with respect to Signal Ground (SG) +3 to +25V dc -3 to -25V dc
Indicators	1 green/red module status indicator, logic side 1 green/red network status indicator, logic side 2 green/red TXD, RXD status indicators, logic side
Keyswitch Position	2 (specialty)
Module Location	1734-TB or -TBS wiring base assembly
Pointbus Current	75mA @ 5V dc
Power Dissipation	0.75W maximum @ 28.8V dc
Thermal Dissipation	2.5 BTU/hr maximum @ 28.8V dc
Isolation Voltage	Tested to withstand 2200V dc for 60s No isolation between individual channels
External dc Power Supply Voltage Voltage Range Supply Current	24V dc nominal 10-28.8V dc 15mA @ 24V dc Fault protected to 28.8V dc
Serial Port Parameters	
Serial Character Framing	7N2, 7E1, 7O1, 8N1, 8N2, 8E1, 8O1, 7E2, 7O2
Serial Port Comm Speed	9600, 1200, 2400, 4800, 19.2k, 38.4k
Serial Port Receive from ASCII Device	
Max Number of Receive Chars	1-128
Receive Record Start Mode	No, exclude, include start delimiter
Receive Start Delimiter	ASCII character
Receive Record End Mode	No, exclude, include end delimiter
Receive End Delimiter	ASCII character
Send (Produce) on DeviceNet to Master	
Receive String Data Type	Array, short_string, string
Pad Mode	Pad mode disabled, enabled
Pad Character	ASCII character
Receive Swap Mode	Disabled, 16-bit, 24-bit, 32-bit swap
DeviceNet Handshake Mode	Master/slave handshake, produce immediate
Produce Assembly Size	4-132
Serial Data	0-128 bytes

Specifications - 1734-232ASC, -485ASC Modules (Continued)		
Receive Transaction ID		0-255
Serial Port Transmit to ASCII Device		
Max Number of Transmit Chars		1-128
Transmit End Delimiter Mode		No, exclude, include end delimiter
Transmit End Delimiter Character		ASCII character
Consume on DeviceNet from Master		
Consume String Data Type		Array, short_string, string
Transmit Swap Mode		Disabled, 16-bit, 24-bit, 32-bit swap
DeviceNet Record Header Mode		Transmit header/immediate
Consume Assembly Size		4-132
Serial Port Transmit/Explicit Messages from Configuration Tool		
Transmit Serial Data String		0-128 bytes
Transmitted Serial Data Length		0-128 bytes
Transmit Transaction ID		0-255
Status		TX FIFO overflow, RX FIFO overflow, RX parity error, handshake error, new data flag
General Specifications		
Dimensions	Inches (Millimeters)	2.21H x 0.47W x 2.97L (56H x 12W x 75.5L)
Environmental Conditions		
Operational Temperature		IEC 60068-2-1 (Test Ad, Operating Cold), IEC 60068-2-2 (Test Bd, Operating Dry Heat), IEC 60068-2-14 (Test Nb, Operating Thermal Shock): -20 to 55°C (-4 to 131°F)
Storage Temperature		IEC 60068-2-1 (Test Ab, Unpackaged Nonoperating Cold), IEC 60068-2-2 (Test Bb, Unpackaged Nonoperating Dry Heat), IEC 60068-2-14 (Test Na, Unpackaged Nonoperating Thermal Shock): -40 to 85°C (-40 to 185°F)
Relative Humidity		IEC 60068-2-30 (Test Db, Unpackaged Nonoperating Damp Heat): 5 to 95% noncondensing
Shock		IEC 60068-2-27 (Test Ea, Unpackaged Shock)
Operating		30g peak acceleration
Nonoperating		50g peak acceleration
Vibration		IEC 60068-2-6 (Test Fc, Operating) Tested 5g @ 10-500Hz
ESD Immunity		IEC 61000-4-2: 6kV contact discharges 8kV air discharges
Radiated RF Immunity		IEC 61000-4-3: 10V/m with 1kHz sine-wave 80%AM from 27MHz to 2000MHz 10V/m with 200Hz 50% pulse 100%AM from 900MHz

Notes:

Using the ASCII Modules with the ControlLogix System Application Examples

About These Examples

For these application examples, the 1734-PDN POINT I/O interface was used to interface with the DeviceNet network. The ASCII modules act as a normal slave to the master scanner. The data that is sent to/from the scanner contains the ASCII data and some specialty bytes.

Serial Port Connector

The ASCII devices are connected to the ASCII modules via a:

- 3-wire communications cable for the RS-232 network.
- 2-wire communications cable for the RS-485 network.
- 4-wire communications cable for the RS-422 network.

Table B.1 Module Terminations

Terminal	RS-232	RS-485	RS-422
0	Tx ¹	S ⁺¹	Tx ⁺¹
1	Rx ²	NC	Rx ⁺¹
2	NC	S ⁻²	Tx ⁻²
3	NC	NC	Rx ⁻²
4	NC	NC	NC
5	NC	NC	NC
6	NC	CG	CG
7	SG	SG	SC

1 S+ and Tx+ are transmit from the module

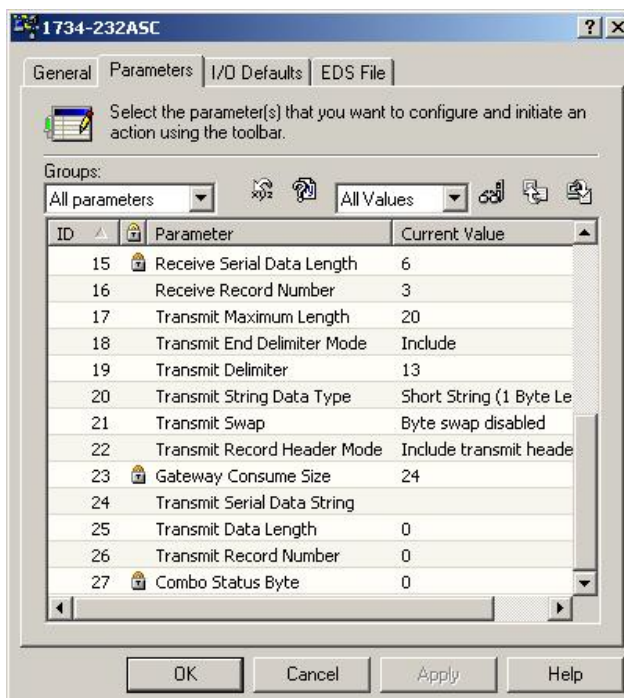
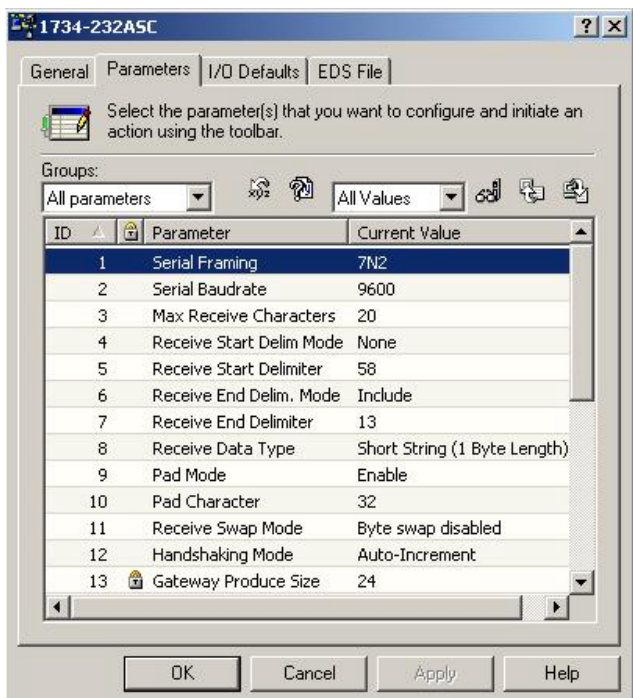
2 S- and Rx- are receive into the module

EDS Configuration

You can configure the ASCII modules through the EDS file using RSNetWorx for DeviceNet. For this example, the following configuration was used:

Table B.2 Application Example Configuration

Parameter	Value
Maximum receive characters	20
Receive data type	Short string (1 byte length)
Handshaking mode	Auto increment
Transmit maximum length	20
Transmit string data type	Short string (1 byte length)



DeviceNet Data Details

With this example's EDS configuration, the ASCII modules take the maximum transmit and receive sizes from the EDS file and add an overhead of 4 bytes to each length. The data lengths in this example are 20 bytes, so the transmit and receive sizes for the scanner would be 24 bytes. The following table illustrates the format of the transmit and receive data with the header bytes.

Table B.3 Receive Data Format - Short_String Data Type

Byte 1	Byte 2	Byte 3	Byte 4	Byte 5-X (Max 128 Bytes)	Byte X+1 (Max = 132)
Transaction ID Byte	Status Byte	Reserved	Length	ASCII Data (following the length byte)	<CR> (Terminator)

Table B.4 Transmit Data Format - Short_String Data Type

Byte 1	Byte 2	Byte 3	Byte 4	Byte 5-X (Max 128 Bytes)	Byte X+1 (Max = 132)
RX ID Byte (Handshaking Mode only)	Transaction ID Byte	Reserved	Length	ASCII Data (following the length byte)	<CR> (Terminator)

Sending Data Through the ASCII Modules

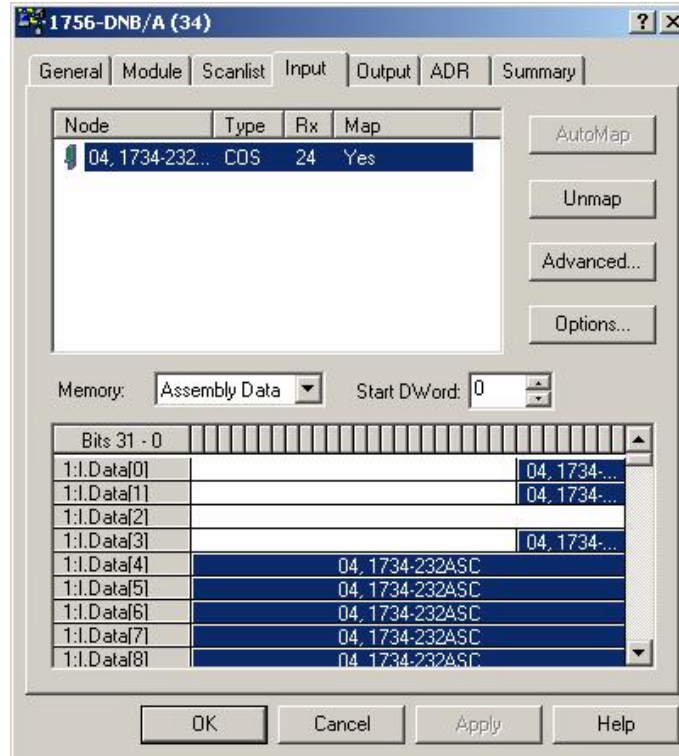
To send data from the master scanner through the ASCII modules, the desired data should be written into the data area, starting at byte 5 after the header. Next, the number of bytes to be transmitted should be put into byte 4 of the header. Lastly, the transaction ID byte 2 needs to be changed from its previous value to trigger the transmission (i.e., incrementing the ID value by 1 each time a message is to be sent).

Receiving Data From the ASCII Modules

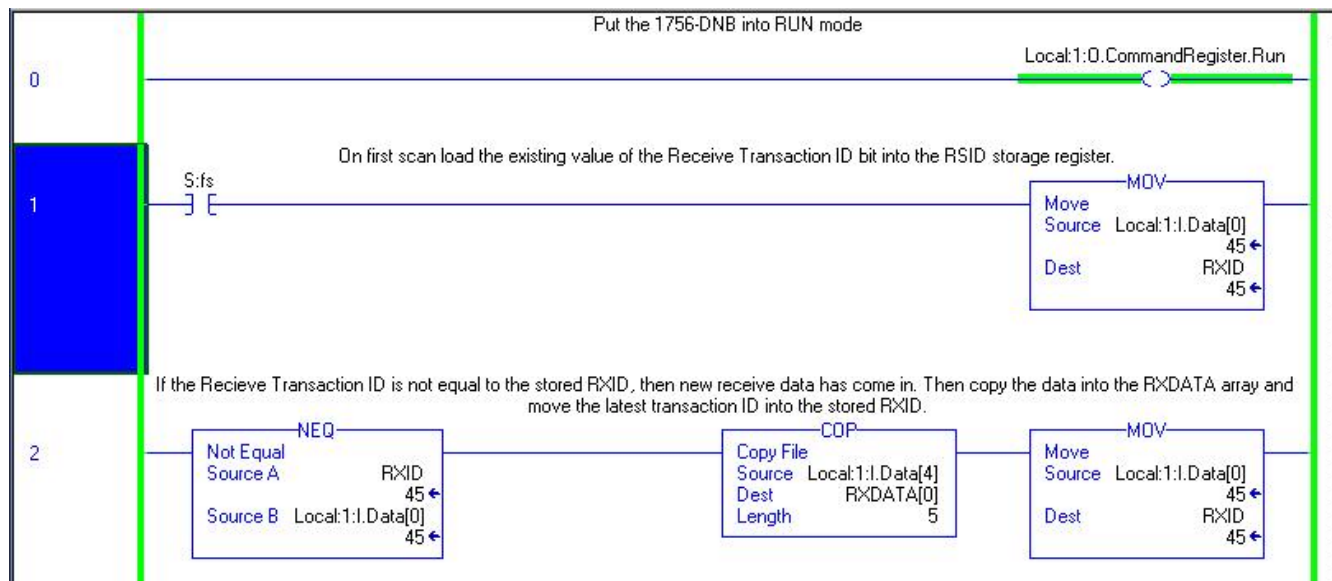
To receive data from the master scanner through the ASCII modules, look for the transaction ID in byte 1 to change in value. When this happens, a new data buffer is available for storage. Read the length of the data from byte 4 and copy that amount of bytes from the data buffer starting at byte 5 into a file.

Reading Data from the ASCII Modules into ControlLogix

For this example, the advanced mapping feature in RSNetWorx for DeviceNet was used to separate the header bytes into their own data locations. The diagram below illustrates that the transaction ID is in Local:1:I.Data[0], the status byte is in Local:1:I.Data[1], and the length is in Local:1:I.Data[3]. The ASCII data starts in Local:1:I.Data[4].



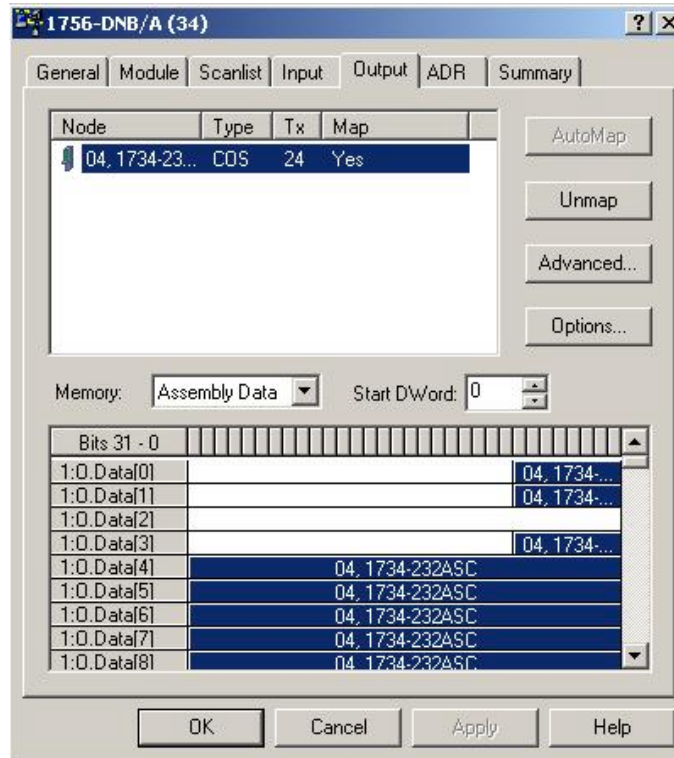
The following ControlLogix ladder logic checks to see if the transaction ID in Local:1:I.Data[0] has changed from a previously stored value. If it has changed, the data starting in Local:1:I.Data[4] is copied to a file and the current ID is stored into a data location.



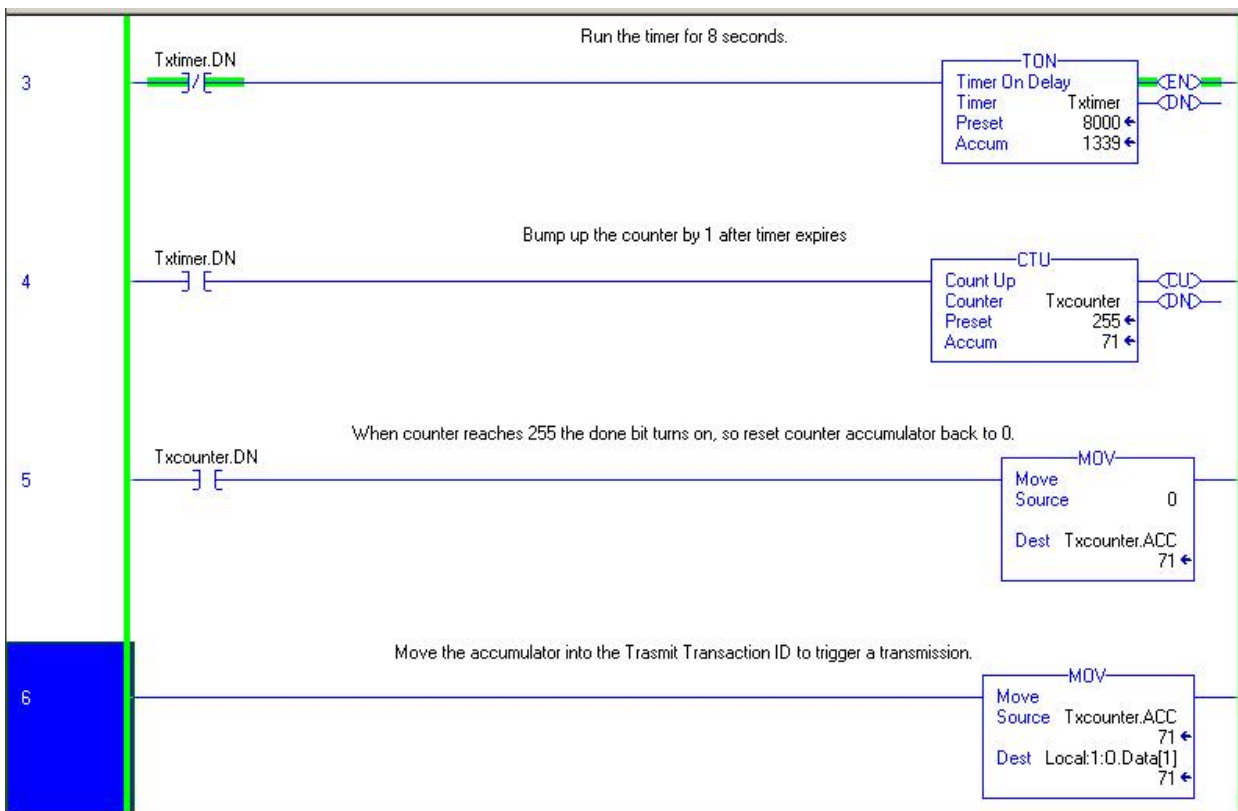
If data is being received quite often, we recommend storing the receive data into some kind of large rotary buffer so as not to overwrite an older packet before it is decoded.

Transmitting Data from ControlLogix Through the ASCII Modules

For this example, the advanced mapping feature in RSNetWorx for DeviceNet was used to separate the header bytes into their own data locations. The diagram below illustrates that the transaction ID is in Local:1:O.Data[1] and the length is in Local:1:O.Data[3]. The ASCII data starts in Local:1:O.Data[4].



The ladder logic below increments a counter every 8 seconds and then copies the accumulator value of the counter into the transaction ID location Local:1:O.Data[1]. When the counter reaches 255, it is automatically wrapped around to 0.



In the output table below, the data being transmitted is already inside the data table starting at Local:1:O.Data[4] and a constant length of 9 is in Local:1:O.Data[3]. Under normal conditions, the transmit data and length would be loaded by the ladder program prior to incrementing the transaction ID.

Tag Name	Value	Force Mask	Style	Type
Local:1:O.CommandRegister	{...}	{...}		AB:1756_DNB_C...
Local:1:O.Data	{...}	{...}	Decimal	DINT[123]
Local:1:O.Data[0]	16#0000_0000		Hex	DINT
Local:1:O.Data[1]	60		Decimal	DINT
Local:1:O.Data[2]	16#0000_0000		Hex	DINT
Local:1:O.Data[3]	9		Decimal	DINT
Local:1:O.Data[4]	'1234'		ASCII	DINT
Local:1:O.Data[5]	'5678'		ASCII	DINT
Local:1:O.Data[6]	'\$00\$00\$00\$1'		ASCII	DINT

Notes:

A

Adding

- ASCII module to network 2-4
- I/O module to network 2-5

ASCII module

- adding to network 2-4
- communications 2-1
- ControlLogix examples B-1
- diagnostics 3-1
- general information 1-1
- setting parameters 2-6
- specifications A-1
- wiring 1-6

Auto Start mode 2-2

- requirements 2-3

B

Base assembly

- mounting 1-1

Buffer

- RX overflow 2-20
- TX overflow 2-20

C

Cable pinouts 1-8

Change of State I/O 1-12

Checking

- I/O status 2-8
- I/O defaults 2-8

Commissioning a node 2-5

Communications

- general information 2-1

Configuration

- assembly 2-9
- overview 2-2
- software 2-2

Connection timer

- setting up 1-13

ControlLogix examples B-1

Cyclic I/O 1-12

D

Data

- new 2-21

Data only mode 2-24

Delimiter operation

- setting up 2-18

DeviceNet

- setting up communications 1-11
- setting up I/O connections 1-12

Diagnostics 3-1

E

EDS file

- viewing 2-8

EPR, See Connection Timer 1-13

Examples

- ControlLogix B-1

Explicit messages

- receive serial data string 2-20
- transmit serial data string 2-28

H

Handshake

- error 2-21
- mode 1-15, 2-27

I

I/O connections

- setting up DeviceNet 1-12

I/O module

- adding to network 2-5
- installing 1-3

I/O status

- checking 2-8

Immediate mode 1-15, 2-27

Input data

- reading serial device 1-9

Installing

- I/O module 1-3
- mounting base 1-1
- removable terminal block 1-4
- serial network 1-8
- wiring base assembly 1-1

K**Keyswitch position** 1-3**M****Mode**

- auto start 2-2
- data only 2-24
- handshake 1-15, 2-27
- immediate 1-15, 2-27
- no pad 1-15
- pad 1-15
 - setting up 2-16
- record header 2-24

Module installation 1-3**Mounting**

- base assembly 1-1

Mounting base

- installing 1-1
- removing 1-5

N**New data** 2-21**No pad mode** 1-15**Node commissioning tool** 2-5**Node setting (out of box)** 2-5**O****Operating mode**

- selections 1-14

Output data

- writing serial output 1-10

Overflow

- RX buffer 2-20
- TX buffer 2-20

P**Pad mode** 1-15

- character 2-16
- selection 2-16
- setting up 2-16

Parameters

- POINT I/O 2-15
- setting ASCII module 2-6

Parity error

- RX 2-21

Pinouts

- cable 1-8

Polled I/O 1-11**Positioning the keyswitch** 1-3**Publications, related** Preface-2**R****Reading**

- serial device input data 1-9

Receive

- string data type 2-18
- swap bytes 2-17

Receive character buffer length

- receive 2-15

Receive characters parameter

- rules for usage 2-17

Receive serial data string

- explicit messages 2-20

Receiving

- serial data 2-15

Record header 2-24**Related publications** Preface-2**Removable terminal block**

- installing 1-4

Removing

- mounting base 1-5

RTB

- installation and removal 1-4

RX buffer overflow 2-20**RX parity error** 2-21

S

Scanner I/O receive size

setting up 2-19

Scanner I/O transmit size

setting up 2-26

Selecting

operating mode 1-14

Serial data

receiving 2-15

transmitting 2-21, 2-26

Serial data string

transmit

explicit messages 2-28

Serial device

reading input data 1-9

Serial network

installing 1-8

Serial output data

writing 1-10

Setting up

ASCII module parameters 2-6

connection timer (EPR) 1-13

delimiter operation 2-18

DeviceNet communications 1-11

DeviceNet I/O connections 1-12

pad mode 2-16

receive character buffer length 2-15

scanner I/O receive size 2-19

scanner I/O transmit size 2-26

swap bytes mode 2-17

transmit character buffer length 2-22

transmit delimiter 2-22

Specifications A-1

Status byte

description 2-20

String data assemblies

transmit 2-23

String data type

receive 2-18

Swap bytes

receive 2-17

transmit 2-17

Swap bytes mode

setting up 2-17

T

Transmit

string data assemblies 2-23

swap bytes 2-17

character buffer length 2-22

delimiter 2-22

serial data 2-21, 2-26

serial data string explicit messages 2-28

TX buffer overflow 2-20

V

Viewing

EDS file 2-8

W

Wiring

ASCII module 1-6

Wiring base assembly 1-1

Writing



How Are We Doing?

Your comments on our technical publications will help us serve you better in the future. Thank you for taking the time to provide us feedback.

You can complete this form and mail it back to us, visit us online at www.ab.com/manuals, or email us at RADocumentComments@ra.rockwell.com

Pub. Title/Type POINT I/O ASCII Modules

Cat. No. 1734-232ASC,
1734-485ASC

Pub. No. 1734-UM009B-EN-P

Pub. Date July 2003

Part No. 957782-64

Please complete the sections below. Where applicable, rank the feature (1=needs improvement, 2=satisfactory, and 3=outstanding).

Overall Usefulness	1	2	3	How can we make this publication more useful for you?
Completeness (all necessary information is provided)	1	2	3	Can we add more information to help you?
				procedure/step illustration feature example guideline other explanation definition
Technical Accuracy (all provided information is correct)	1	2	3	Can we be more accurate?
				text illustration
Clarity (all provided information is easy to understand)	1	2	3	How can we make things clearer?
Other Comments	You can add additional comments on the back of this form.			

Your Name _____
Your Title/Function _____

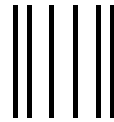
Location/Phone _____
Would you like us to contact you regarding your comments?
 No, there is no need to contact me
 Yes, please call me
 Yes, please email me at _____
 Yes, please contact me via _____

Return this form to: Rockwell Automation Technical Communications, 1 Allen-Bradley Dr., Mayfield Hts., OH 44124-9705
Phone: 440-646-3176 Fax: 440-646-3525 Email: RADocumentComments@ra.rockwell.com

PLEASE FASTEN HERE (DO NOT STAPLE)

Other Comments

PLEASE FOLD HERE



NO POSTAGE
NECESSARY
IF MAILED
IN THE
UNITED STATES

PLEASE REMOVE

BUSINESS REPLY MAIL

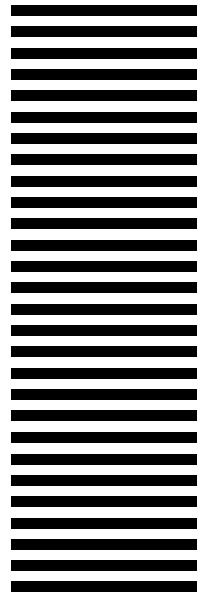
FIRST-CLASS MAIL PERMIT NO. 18235 CLEVELAND OH

POSTAGE WILL BE PAID BY THE ADDRESSEE



**Rockwell
Automation**

1 ALLEN-BRADLEY DR
MAYFIELD HEIGHTS OH 44124-9705



www.rockwellautomation.com

Corporate Headquarters

Rockwell Automation, 777 East Wisconsin Avenue, Suite 1400, Milwaukee, WI, 53202-5302 USA, Tel: (1) 414.212.5200, Fax: (1) 414.212.5201

Headquarters for Allen-Bradley Products, Rockwell Software Products and Global Manufacturing Solutions

Americas: Rockwell Automation, 1201 South Second Street, Milwaukee, WI 53204-2496 USA, Tel: (1) 414.382.2000, Fax: (1) 414.382.4444

Europe: Rockwell Automation SA/NV, Vorstlaan/Boulevard du Souverain 36-BP 3A/B, 1170 Brussels, Belgium, Tel: (32) 2 663 0600, Fax: (32) 2 663 0640

Asia Pacific: Rockwell Automation, 27/F Citicorp Centre, 18 Whitfield Road, Causeway Bay, Hong Kong, Tel: (852) 2887 4788, Fax: (852) 2508 1846

Headquarters for Dodge and Reliance Electric Products

Americas: Rockwell Automation, 6040 Ponders Court, Greenville, SC 29615-4617 USA, Tel: (1) 864.297.4800, Fax: (1) 864.281.2433

Europe: Rockwell Automation, Brühlstraße 22, D-74834 Elztal-Dallau, Germany, Tel: (49) 6261 9410, Fax: (49) 6261 17741

Asia Pacific: Rockwell Automation, 55 Newton Road, #11-01/02 Revenue House, Singapore 307987, Tel: (65) 351 6723, Fax: (65) 355 1733